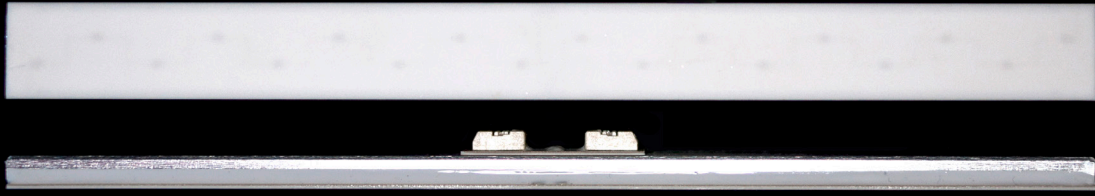


AIRELIGHT™ LINEAR ES 0.5



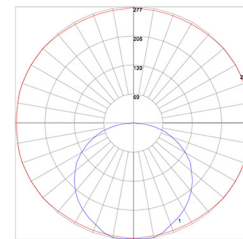
AIRELIGHT™ LINEAR ES 0.5



Description: The Airelight™ Linear ES 0.5 luminaire allows for ultimate flexibility for all lighting projects. Utilizing its ultra slim profile and light weight, the Airelight™ Linear ES 0.5 is ideal for suspended, surface mounted, embedded, and under cabinet lighting applications (See "Mounting Options" on following page). Capable of 495 lumens/foot (infinitely dimmable) @ 124 lumens per watt efficacy, the Airelight™ Linear ES 0.5 can be installed individually or linked continuously, embedded in a ceiling or wall, suspended, or surface mounted anywhere light is needed. A truly sustainable light fixture, the Airelight™ Linear ES 0.5 is certified Red List Free by the International Living Future Institute (ILFI), contains no harmful materials and is comprised of 98% ceramic and aluminum. Applications: Office, Industrial, Retail, Display, Under Cabinet, Task, and Residential Environments

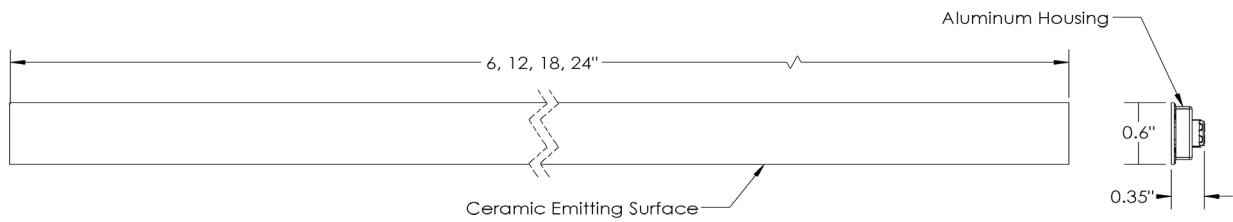
SPECIFICATIONS

Color Temperature	4000K, 3500K, 3000K, 2700K
Beam Angle	Lambertian
Max Fixture Run Length	24' with Adjustable 24VDC 100W Power Supply; Unlimited with Additional Power Supplies or POE Channels
Power Consumption	4.0W per foot
Lumens Per Foot	495 (4000K) / 486 (3500K) / 486 (3000K) / 444 (2700K)
Efficacy (lms/W)	124 (4000K)
CRI	82-84 typical
Available Lengths	6", 12", 18", 24"
Interconnect/Cabling	SMT Connector/ 2CONN Wire-18AWG/90C (not included)
Operating Temperature	-10°F to 115°F / -23°C to 46°C
Operating Voltage	24.15VDC (with Adjustable 24VDC Power Supply)
Dimming	1-100% via Compatible Low Voltage PWM or 0-10V
Rating	Dry/Damp Rated
Warranty	5 Years
Weight	0.7oz/ft (66g/m)
Dimensions	W 0.6" x H 0.35" x L 6, 12, 18, 24"



Photometric Data:
*Perfectly lambertian output

Certifications  



877.298.0092



goldeneyelighting.com

V 1.11

ORDER CODES

Product Line	Width	Model	Length	CCT	CRI
AL	- 0.5	- ES	- 24	- 40K	- 80+
Airelight™ Linear	0.5"	ES	6"	27K	80+
			12"	30K	
			18"	35K	
			24"	40K	

POWER SUPPLY SELECTION

Airelight™ luminaires require an external DC power supply for operation. Identify total system wattage needed. Order the type and quantity of Class 2, 24VDC Power Supply(s) that meets your requirement.

Power Supply Calculation
 Linear Feet Required x Power Consumption (4.0W) =
 Total System Wattage

e.g. : 18ft x 4.0W = 72W (See Table A)

POWER SUPPLY COMPATIBILITY FOR AIRELIGHT™ SYSTEM

Total System Wattage	Compatible Power Supply
< 60W	SKU# 62569
< 100W	SKU# 97422
<200W	SKU# 84035

Table A

POWER SUPPLIES

SKU#	Description
84035	Amperor 2X 100W, 24V, 0-10V Dimmable, Class 2, LED Driver
97422	Amperor 100W, 24V, 0-10V Dimmable, Class 2, LED Driver
62569	Amperor 60W, 24V, 0-10V Dimmable, Class 2, LED Driver

CONTROLS

31935	Illumra Wireless Dimmer #E9X-D02FL	
83374	Illumra Single Rocker Switch #E9T-S1AWH	
25251	Illumra Dual Rocker Switch #E9T-S2AWH	

MOUNTING OPTIONS

Designed to maintain the Airelight™ luminaires' slim profile, the optional snap channel profiles serve as stylish and minimalistic housing options. The attachment clips on the Airelight ES model simply snap into the specified channel, providing a secure attachment and easy installation.

50512 / 59885	Snap Channel (Airelight Linear ES 0.5) Black: 4 / 6ft
30231 / 74552	Snap Channel (Airelight Linear ES 0.5) Light Grey: 4 / 6ft
19390	Snap Channel (Airelight Linear ES 0.5) White/Custom: 6ft
56980	Mud-In Channel (Airelight Linear ES 0.5) Light Grey: 6ft
94413	End Cap (Snap Channel Airelight Linear ES 0.5) Qty: 2: Anodized Aluminum
67667	Mounting Plate(2): For embedding to non-magnetic surface

AIRELIGHT™ LINEAR INSTALLATION INSTRUCTIONS

*Airelight™ Linear luminaires should only be connected to 24V Class II drivers. Use of any other power source will cause damage and may void the warranty.

*Only use 18 AWG stranded wire to connect directly to each luminaire. If larger gauge is used for cable drop, reduce to 18 AWG to each luminaire.

*Goldeneye will not be held responsible if the luminaires are not installed according to applicable codes and safety standards.

1. Remove the junction box cover.
2. Make wiring connections from 24V power supply to first luminaire. (Reference cable length chart below)
3. Put junction box cover back on using associated screws.

*Recommended Cable Lengths to Minimize Voltage Drop

*Only 18 AWG stranded wire should be inserted into each luminaire.
*Never use solid core wire when connecting to a luminaire.

Watts	8	12	16	20	24	28	32	36	40	44	48
18 AWG	92 ft	61 ft	46 ft	36 ft	30 ft	26 ft	23 ft	20 ft	18 ft	16 ft	15 ft
16 AWG	146 ft	97 ft	73 ft	58 ft	48 ft	41 ft	36 ft	32 ft	29 ft	26 ft	24 ft
14 AWG	233 ft	155 ft	116 ft	93 ft	77 ft	66 ft	58 ft	51 ft	46 ft	42 ft	38 ft
12 AWG	370 ft	247 ft	185 ft	148 ft	123 ft	105 ft	92 ft	82 ft	74 ft	67 ft	61 ft

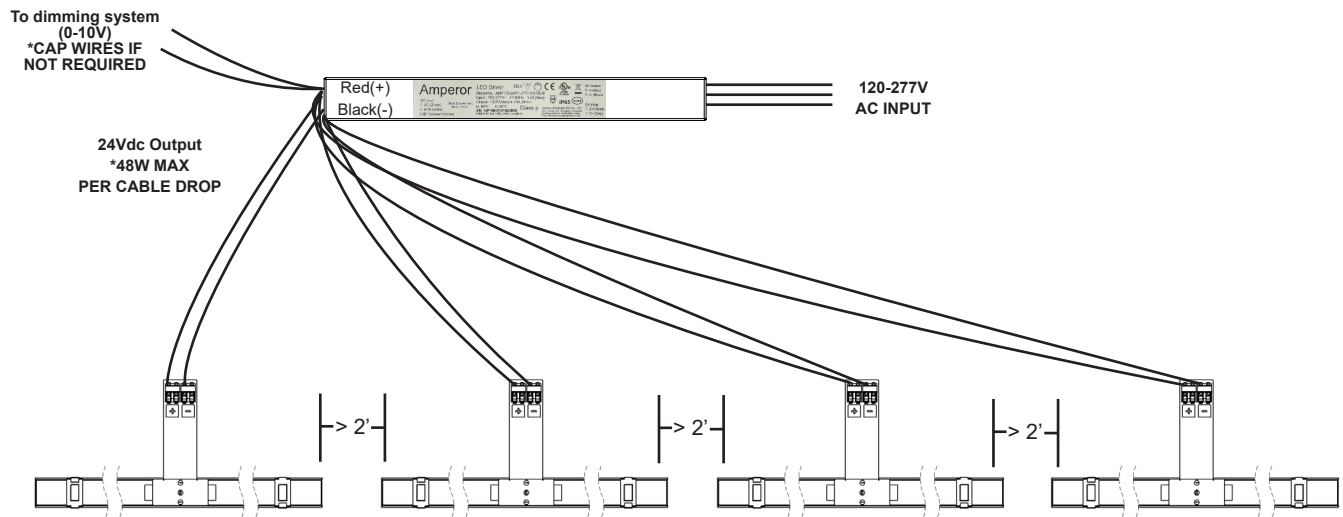
AL-0.5-SC/ES-xx-xx-xx = 4 Watts/ft

*Maximum 48W Per Cable Drop

AL-1.0-SC/ES-xx-xx-xx = 6 Watts/ft

*Connect up to 96% of rated power supply
(Ex: 100W Power Supply: 96W max)

Wiring Example #1: Airelight™ Linear spaced apart (greater than 2' end to end)



Wiring Example #2: Airelight™ Linear mounted end to end (less than 2' end to end)

