

CLIP OPTIONS(9/16" TBAR / TEGULAR)

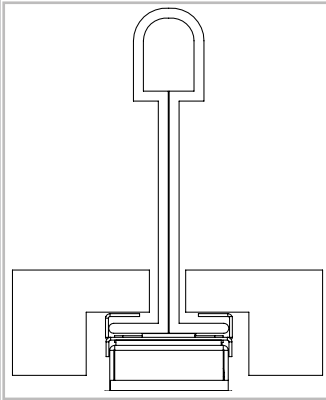


0.5 LINEAR2 SC TO 9/16" TBAR(TEGULAR)

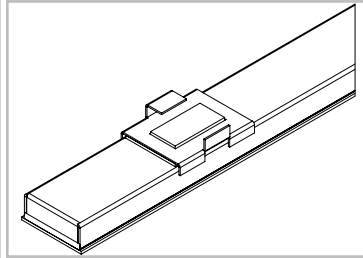
T1

Tegular Panel (9/16")

*aligns 0.5 Linear2 SC to 9/16" TBAR
*Available Lengths: 2' (Daisy chain for longer runs)



TBAR Magnet Connector (9/16")



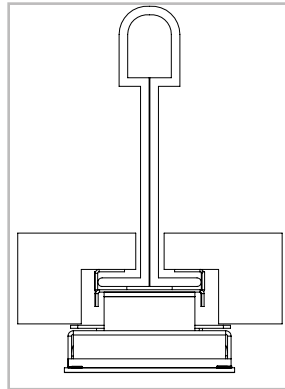
1/4" Panel Depth (Square Tegular Ceiling Tiles)
Armstrong Suprafine 9/16" / Prelude XL 15/16"
CertainTeed Stab 9/16" / 15/16"
USG DX/DXL 15/16" / Centricitee
*inquire about other compatible t-bar systems

1.0 LINEAR2 SC TO 9/16" TBAR(TEGULAR)

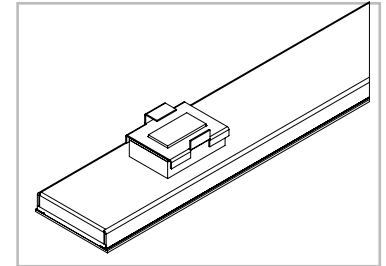
T2

Tegular Panel (9/16")

*aligns 1.0 Linear2 SC to 9/16" TBAR
w/ Spacer for Tegular Ceiling Tiles
*Available Lengths: 2' (Daisy chain for longer runs)



TBAR Magnet Connector w/ Spacer



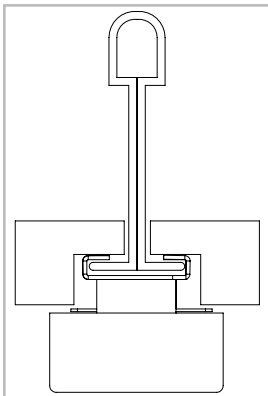
1/4" Panel Depth (Square Tegular Ceiling Tiles)
Armstrong Suprafine 9/16" / Prelude XL 15/16"
CertainTeed Stab 9/16" / 15/16"
USG DX/DXL 15/16" / Centricitee
*inquire about other compatible t-bar systems

1.0 LINEAR2 SC CHANNEL TO 9/16" TBAR(TEGULAR)

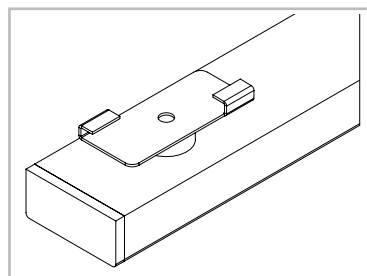
T3

Tegular Panel (9/16")

*aligns 1.0 Linear2 SC Channel to 9/16" TBAR
w/ Spacer for Tegular Ceiling Tiles
*Available Lengths: 2, 4, 6, 8'



TBAR Swivel Connector (9/16")



1/4" Panel Depth (Square Tegular Ceiling Tiles)
Silhouette XL 9/16" Bolt Slot - 1/8" Reveal
CertainTeed EZ Stab Bolt Slot System - 1/8"
USG DONN Brand Finline 1/8 DXFF 9/16"
*inquire about other compatible 9/16th t-bar systems