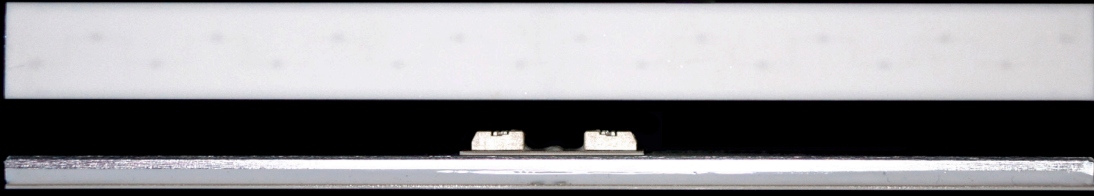


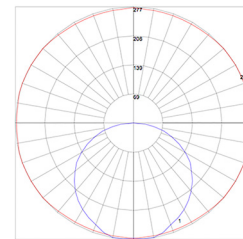
AIRELIGHT™ LINEAR ES 1.0



Description: The Airelight™ Linear ES 1.0 luminaire allows for ultimate flexibility for all lighting projects. Utilizing its ultra slim profile and light weight, the Airelight™ Linear ES 1.0 is ideal for suspended, surface mounted, embedded, and under cabinet lighting applications. Capable of 770 lumens/foot (infinitely dimmable) @ 128 lumens per watt efficacy, the Airelight™ Linear ES 1.0 can be installed separately or linked continuously, embedded in a ceiling or wall, suspended, or surface mounted anywhere light is needed. A truly sustainable light source comprised of ceramic and aluminum, the Airelight™ Linear ES 1.0 uses 50x fewer raw materials than conventional light sources (measured by weight of fixtures in a typical installation).
Applications: Office, Industrial, Retail, Display, Under Cabinet, Task, and Residential Environments

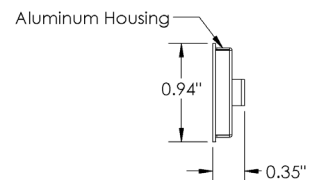
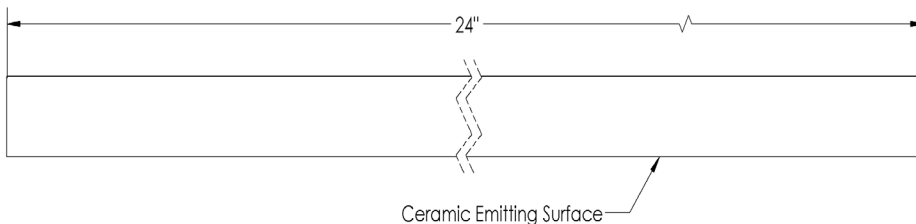
SPECIFICATIONS

Color Temperature	4000K, 3500K, 3000K, 2700K
Beam Angle	Lambertian
Max Fixture Run Length	16' with Adjustable 24VDC 100W Power Supply; Unlimited with Additional Power Supplies or POE Channels
Power Consumption	6.0W per foot
Lumens Per Foot	770 @ 4000K / 755 @ 3500K / 755 @ 3000K / 691 @ 2700K
Efficacy (lms/W)	128 @ 4000K / 125 @ 3500K / 125 @ 3000K / 115 @ 2700K
CRI	83 @ 4000K / 84 @ 3500K / 83 @ 3000K / 82 @ 2700K
Available Lengths	6", 12", 18", 24"
Interconnect	SMT Connector/2CONN Wire-20AWG/90C (included)
Operating Temperature	-10°F to 115°F / -23°C to 46°C
Operating Voltage	24.15VDC (with Adjustable 24VDC Power Supply)
Dimming	1-100% via Compatible Low Voltage PWM or 0-10V
Rating	Dry/Damp Rated
Warranty	5 Years
Weight	1.0oz/ft (98g/m)
Dimensions	W 0.94" x H 0.35" x L 6, 12, 18, 24"



Photometric Data:
*Perfectly lambertian

Certifications



ORDER CODES

Product Line	Width	Model	Length	CCT	CRI
AL	- 1.0	- ES	- 24	- 40K	- 80+
Airelight™ Linear	1.0"	ES	6" 12" 18" 24"	27K 30K 35K 40K	80+

POWER SUPPLY SELECTION

Airelight™ luminaires require an external DC power supply for operation. Identify total system wattage needed. Order the type and quantity of Class 2, 24VDC Power Supply(s) that meets your requirement.

Power Supply Calculation
 Linear Feet Required x Power Consumption (6.0W) =
 Total System Wattage

e.g. : 12ft x 6.0W = 72W (See Table A)

POWER SUPPLY COMPATIBILITY FOR AIRELIGHT™ SYSTEM

Total System Wattage	Compatible Power Supply
< 40W	SKU# 36789
< 60W	SKU# 42110
<75W	SKU# 56975
< 80W	SKU# 85376
< 100W	SKU# 40515
< 200W	SKU# 90945

Table A

POWER SUPPLIES

SKU#	Description
90945	ERG 2X 100W UL Listed XLD200-2-24V-FC Driver in Enclosure
40515	Meanwell HLG-100H-24A Power Supply in ETL Listed Enclosure (12x3.5x2")
85376	Meanwell HLG-80H-24A Power Supply in ETL Listed Enclosure (12x3.5x2")
56975	ERG 75W UL Listed XLD75-1-24V-FC Driver in Enclosure
42110	Meanwell HLG-60H-24A Power Supply in ETL Listed Enclosure (12x3.5x2")
36789	Meanwell HLG-40H-24A Power Supply in ETL Listed Enclosure (12x3.5x2")

CONTROLS

31935	Illumra Wireless Dimmer #E9X-D02FL	29053	ERG PWM Dimmer ERGL-DIMC2 (1 Ch 0-10V Wired)
59493	Illumra Dimmer (Hardwired) #NWO-D02FP (0-10V)	10912	ERG PWM Dimmer ERGL-DIM2IN (2 Ch 0-10V Wired)
83374	Illumra Single Rocker Switch #E9T-S1AWH		
25251	Illumra Dual Rocker Switch #E9T-S2AWH		

MOUNTING OPTIONS

84361	Mounting Plate Kit (For embedding to non magnetic surface)
37065	U-Channel (Airelight Linear ES 1.0) White_6ft
33164	U-Channel (Airelight Linear ES 1.0) Black_6ft
33497	End Cap U-Channel ES 1.0 (Qty: 2)